

#1 NAMES
(Identifying the Parts of Choir Music)

A Word to the Wise:

Choirs all over the world have singers who can't read music. Help to change that!

Notes for the Know-it-all: Imagine if actors couldn't read words...how silly.

Analogy: You can put the puzzle together faster and more completely when you have all the pieces.

Activity: Using your music, find the soprano part, alto, tenor, bass. Is it a *cappella*?

"All the performances of human art...are instances of the resistless force of perseverance." **Ben Johnson**

- 1. NAMES
Soprano: highest pitches
Alto: below soprano
Tenor: below alto
Bass: lowest pitches

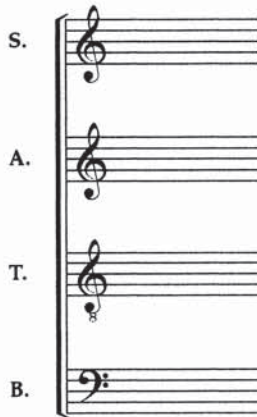
Abbreviated: SATB

- 2. VOICINGS
 Choral music is written in a wide variety of voicings: SATB, SAB, SSA, TTBB, etc.

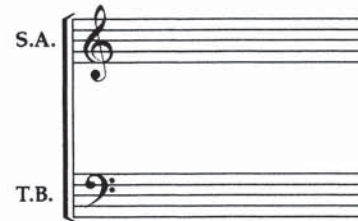
- 3. DESIGN
 There are two basic designs for a choral score:

- A. Each part is written on a separate line.
- B. Two or more voices per line.

A.



B.



- 4. WORTH KNOWING
A Cappella is a Latin expression meaning "sung without instrumental accompaniment"; in other words, "voices only."